



## SERVICE

A qualified team is available for any requirement after the purchase of CTE products:

- service is available through a broad based network of CTE Tracess dealers and workshops.
- Spare parts availability guaranteed for a minimum of 10 years.



## TRAINING CLASSES

The improvement of Safety at Work is part of the CTE mission.

How? Training and educating operators and maintenance engineers to a high standard, CTE SpA has been an IPAF certified training centre since 2002.

To date more than 1000 operators have been trained by our qualified instructors in strict accordance with IPAF standards.



Product specifications are subject to change without notice or obligation. Technical features and drawings in this brochure are for illustrative purposes only. TRACCESS - ed. 10/09



Branches: Rovereto, Dolo and S. Giuliano Milanese



## FIRE FIGHTING AND RESCUE AERIAL LADDER PLATFORM

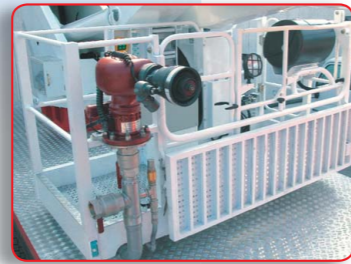


ENGLISH

CTE S.p.A. | [www.ctelift.com](http://www.ctelift.com)

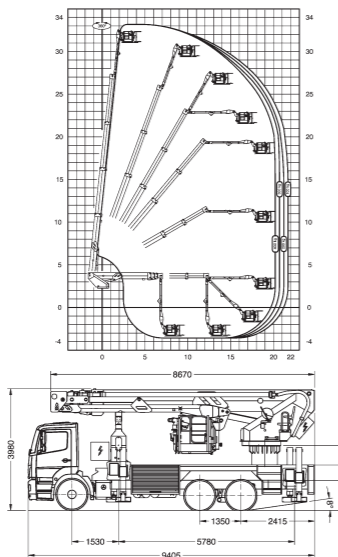
Sales Office Dolo (Ve) - [dolo@ctelift.com](mailto:dolo@ctelift.com)  
 ph. +39 041 51.00.130 - fax +39 041 41.38.44  
 Headquarter Rovereto (Tn) - [info@ctelift.com](mailto:info@ctelift.com)  
 ph. +39 0464 48.50.50 - fax +39 0464 48.50.99  
 Milano Branch S. Giuliano Milanese (Mi) - [milano@ctelift.com](mailto:milano@ctelift.com)  
 ph. +39 02 98.81.100 - fax +39 02 98.28.20.96  
 Bertinoro Branch & Factory (FC) - [bertinoro@ctelift.com](mailto:bertinoro@ctelift.com)  
 ph. +39 0543 44.88.30 - fax +39 0543 44.83.43





# TECHNICAL DATA

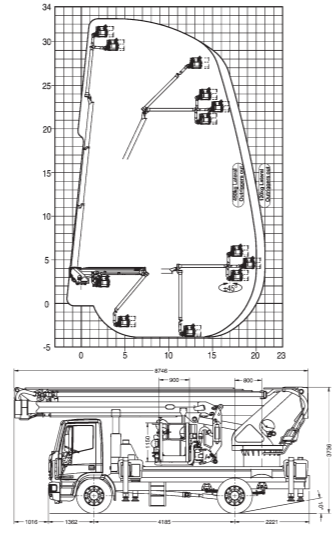
The B-fire is a machine specifically engineered and built for fire fighting and rescue operations. It is available with or without the side ladder and comes with a wide range of options to satisfy the most demanding working conditions.



## B-fire 330

Max. working height * (m)	<b>33</b>
Cage capacity SWL (kg)	<b>400</b>
Cage dimensions (LxWxH - mm)	<b>2240x1000x1120</b>
Max. outreach * (m/kg)	<b>21.5/100</b>
Min truck GW (t)	<b>26</b>
Shortest overall length * (mm)	<b>9400</b>
Min. stabilizers width on ground * (mm)	<b>5780</b>
Slewing angle (°)	<b>360 cont.</b>

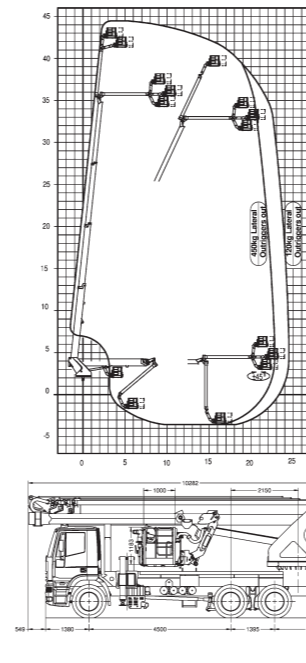
\* Indicative data subject to modification based on the selected vehicle (wheelbase & GW)



## B-fire 330 A

Max. working height * (m)	<b>32,5</b>
Cage capacity SWL (kg)	<b>450</b>
Cage dimensions (LxWxH - mm)	<b>2240x1000x1120</b>
Max. outreach * (m/kg)	<b>22/450</b>
Min truck GW (t)	<b>18</b>
Shortest overall length * (mm)	<b>8819</b>
Min. stabilizers width on ground * (mm)	<b>6300</b>
Slewing angle (°)	<b>360 cont.</b>

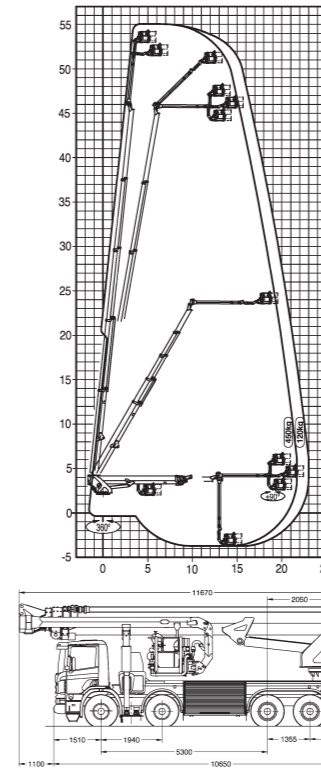
\* Indicative data subject to modification based on the selected vehicle (wheelbase & GW)



## B-fire 450

Max. working height * (m)	<b>44,6</b>
Cage capacity SWL (kg)	<b>450</b>
Cage dimensions (LxWxH - mm)	<b>2240x1000x1120</b>
Max. outreach * (m/kg)	<b>25/450</b>
Min truck GW (t)	<b>28</b>
Shortest overall length * (mm)	<b>10281</b>
Min. stabilizers width on ground * (mm)	<b>5780</b>
Slewing angle (°)	<b>360 cont.</b>

\* Indicative data subject to modification based on the selected vehicle (wheelbase & GW)



## B-fire 550

Max. working height * (m)	<b>55</b>
Cage capacity SWL (kg)	<b>450</b>
Cage dimensions (LxWxH - mm)	<b>2240x1000x1120</b>
Max. outreach * (m/kg)	<b>23/120</b>
Min truck GW (t)	<b>32</b>
Shortest overall length * (mm)	<b>11670</b>
Min. stabilizers width on ground * (mm)	<b>6300</b>
Slewing angle (°)	<b>360 cont.</b>

\* Indicative data subject to modification based on the selected vehicle (wheelbase & GW)

## MAIN TECHNICAL SPECIFICATIONS

- Telescopic main boom with, 180 degrees jib plus  $\pm 90^\circ$  articulating cage arm (BHD-A)
- Max Cage Capacity 450 kg
- Aluminium cage dim. 2240x1000x1120 equipped with front drop down platform
- Automatic collision cage guard system
- Compact dimensions in travelling positions
- Slide-out internal cat-track for easy maintenance
- Jib folds alongside the main boom for a compact overall height
- Proportional electro-hydraulic controls with speed ramp
- 360 degrees continuous turret rotation
- Turret/Basket B/W LCD display
- Interphone system
- Aluminium water pipeline
- Stand by emergency system
- Cage levelling control switch (automatic/manual)

## OPTIONALS

- Rescue ladder
- Engine-Independent hydraulic motor pump
- High voltage line approach warning indicator with audible alarm
- Hydraulic Power Generator 110V/220V 3.5 KVA
- Hydraulic Power Generator 220V/380V 6.5 KVA
- Breathing air pipeline from slew unit to cage
- Variable jacking system
- Wind gauge with audible alarm in the cage
- 70W/24V working lamp
- LCD Colour display on turret and cage control station

